

ROUND GRIPPERS (COUNTERBORED)

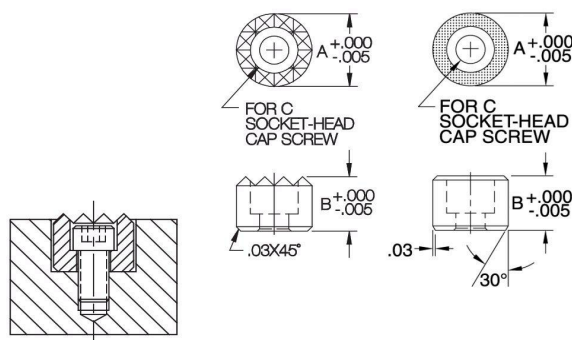
HARDENED TOOL STEEL: M-2 TOOL STEEL, HEAT TREATED RC 60-62, BLACK OXIDE FINISH
ABRASIVE DIAMOND: 17-4 STAINLESS STEEL, HEAT TREATED RC 43-46, WITH ABRASIVE DIAMOND SURFACE



**Hardened Tool Steel
(Serrated)**



Abrasive Diamond



Counterbored Round Grippers are ideal for blind-hole installation and surface mounting. Fasten with a standard socket-head cap screw. The serrated version, made of hardened tool steel, is designed to slightly penetrate the workpiece to significantly increase gripping force. The abrasive-diamond version has an abrasive-diamond surface permanently fused to a hardened stainless steel pad. This abrasive surface, comparable to a 100-grit abrasive, provides significant holding force with relatively low clamping pressure and minimal surface marring. This diamond-particle surface also offers excellent wear resistance.

INCH

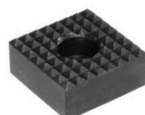
PART NO. HARDENED TOOL STEEL (SERRATED)	PART NO. DIAMOND ABRASIVE	A DIA	B	C	SERRATIONS (HARDENED TOOL STEEL VERSION)	
CL-8-RGB	CL-8-RGBD	1/2	3/8	#8	Fine	.125x90°
CL-10-RGB	CL-10-RGBD	5/8				
CL-12-RGB	CL-12-RGBD	3/4	1/2	#10		
CL-16-RGB	CL-16-RGBD	1		1/4		

METRIC

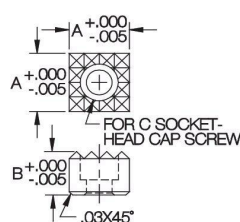
CLM-12-RGB	CLM-12-RGBD	12mm	10mm	M4	Fine	3.2x90°
CLM-16-RGB	CLM-16-RGBD	16mm				
CLM-20-RGB	CLM-20-RGBD	20mm	12mm	M5		
CLM-25-RGB	CLM-25-RGBD	25mm		M6		

SQUARE GRIPPERS (COUNTERBORED)

M-2 TOOL STEEL, HEAT TREATED RC 60-62, BLACK OXIDE FINISH



**Hardened Tool Steel
(Serrated)**



Counterbored Square Grippers are ideal for blind-hole installation and surface mounting. Fasten with a standard socket-head cap screw.

COUNTERBORED (INCH)

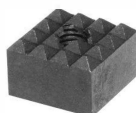
COUNTERBORED (INCH)					
PART NO. HARDENED TOOL STEEL (SERRATED)	A	B	C	SERRATIONS	
CL-8-SGB	1/2	1/2	#10	Fine	.125x90°
CL-12-SGB	3/4		1/4		
CL-16-SGB	1				

COUNTERBORED (METRIC)

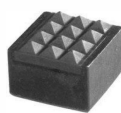
CLM-12-SGB	12mm	12mm	M4	Fine	3.2x90°
CLM-20-SGB	20mm		M5		
CLM-25-SGB	25mm		M6		

SQUARE GRIPPERS

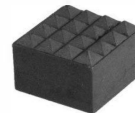
HARDENED TOOL STEEL: M-2 TOOL STEEL, HEAT TREATED RC 60-62, BLACK OXIDE FINISH
CARBIDE TIPPED: ALLOY STEEL, HEAT TREATED, WITH BRAZED CARBIDE INSERT, BLACK OXIDE FINISH
SOLID CARBIDE: CARBIDE WITH STEEL THREAD INSERT



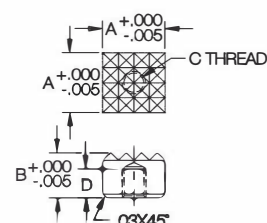
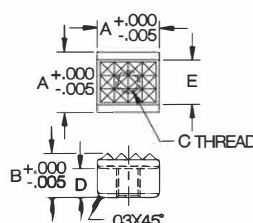
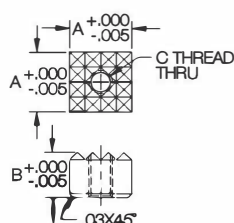
**Hardened
Tool Steel
(Serrated)**



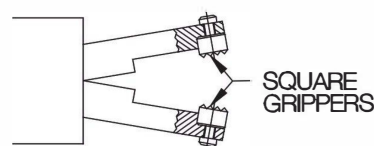
**Carbide
Tipped
(Serrated)**



**Solid
Carbide
(Serrated)**



Square Grippers are similar to Round Grippers, but their shape is useful when positive resistance to rotation is required (they can be mounted against a step to prevent rotation). These serrated grippers are hard, replaceable inserts that provide additional holding force and/or wear resistance when installed in a fixture. They are designed to slightly penetrate the workpiece to significantly increase gripping force, rather than relying on static friction alone. The hardened-tool-steel version is the most economical and impact resistant. The carbide-tipped version is still economical and impact resistant while providing extra durability. The solid-carbide version is the most durable.



Square Grippers can be mounted against a step for positive resistance to rotation.

INCH

PART NO. HARDENED TOOL STEEL (SERRATED)	PART NO. CARBIDE TIPPED (SERRATED)	PART NO. SOLID CARBIDE (SERRATED)	A	B	C	SERRATIONS	
CL-6-SG	—	—	3/8	3/8	#10-32	XFine	.094x90°
CL-8-SG	CL-8-SGT	CL-8-SGC	1/2			Fine	.125x90°
CL-12-SG	—	—	3/4		1/4-28	Fine	.125x90°
CL-16-SG	—	—	1				

METRIC

CLM-10-SG	—	—	10mm	10mm	M5	XFine	2.4x90°
CLM-12-SG	CLM-12-SGT	—	12mm			Fine	3.2x90°
CLM-20-SG	—	—	20mm				
CLM-25-SG	—	—	25mm		M6		